



Illinois African Americans for Equitable Redistricting

Prepared by Valerie F. Leonard
Founder, Nonprofit Utopia, LLC
April 24, 20223



Image by [StockSnap](#) from [Pixabay](#)

Who We Are

- Illinois African Americans for Equitable Redistricting is an ad hoc group that has come together to ensure that the 2021 redistricting process is implemented taking into account issues of concern to Black people around the State.
- Given that operationalizing the new Elected Representative School Board in Chicago requires drawing electoral districts utilizing apportionment, we are sharing our thoughts on the process.

What We Do

- Provide
 - Education surrounding redistricting issues, policies and programs
 - Oral and written testimony at redistricting hearings on the state and local levels
 - Mapping proposals

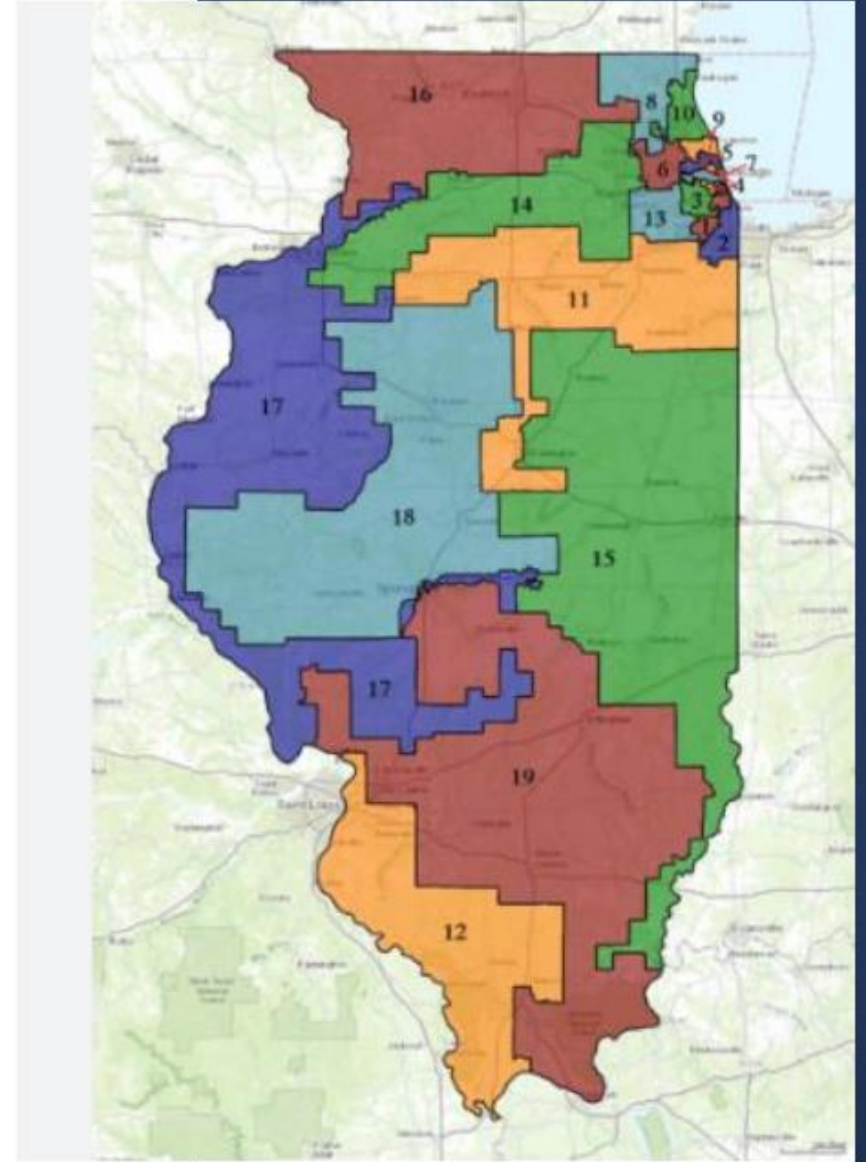




Image by Alisa Dyson from Pixabay

What We Have Accomplished This Year

- Provided written and oral testimony at the first hearing held at Westinghouse High School
- Wrote an op-ed for Crain's Chicago Business
- Raised awareness of the issues surrounding the Chicago Elected Representative Board of Education (ERSB)
- Coordinated with over 30 other organizations to write a joint letter to our elected officials outlining our issues and proposals for the ERSB
- Developed a proposal for the creation of a standing committee of the Board of Education which focuses solely on issues of Black CPS students and their families
- Developed a mapping proposal depicting 10 ERSB electoral districts throughout the City of Chicago

Signatories to Our Letter to Elected Officials

- Tina Augustus, Member, Illinois African Americans for Equitable Redistricting
- Clifton Ballard, Founder, Dreamchasers United, NFP
- Matt Brandon, President, Operation Neighborhood Safety
- Karl Brinson, President, Chicago Westside NAACP
- Apriel Campbell, Founder, The Ivy Group
- Michael Cannon, Founder, C.A.N.D.O.R. Enterprises, NFP
- Rosita Chatonda, Founder, CAUSE
- Bernard Clay, Executive Director, Introspect Youth Services
- Willie Cole, Member, Illinois African Americans for Equitable Redistricting
- Cecile DeMello, Executive Director, Teamwork Englewood
- Michelle Dinneen-White, Founder, Play Smart Literacy
- Audrey Dunford, Founder, Be Aud
- Natasha Dunn, Co-Founder and Executive Director, Black Community Collaborative
- Christyn S. Freemon
- Mary Russell Gardner, President, Urban Technicians, LLC, Resident, Austin Community
- Rev. Walter C. Harris, Pastor, Carey Tercentenary AME Church
- Dianne Hodge, South Shore
- Nicole Jeanine Johnson, The Lotus Lair
- Joyce Lane, Resident, Bronzeville
- Valerie F. Leonard, Co-Founder, Illinois African Americans for Equitable Redistricting
- Essie Leonard, Retired Educator, Chicago Public Schools
- Brian Mullins, Founder, Brian Mullins, Citizens for Civic Education, Co-Founder, Black Community Collaborative
- Nonprofit Utopia, LLC 23. Crystal Overton, The Overton Group Consultants
- Dr. Carmen Palmer, PhD, Founder, Educational Village Keepers (EDVK)
- Tanesha Peeples, Executive Director, The Roots Initiative, Co-Founder, Black Community Collaborative
- Mattie J. Phillips, BA, MACM, DD, Senior Pastor, Jesus Word Center Church
- Nachel Pugh, Co-Founder, John Walt Foundation
- Tumia Romero, Resident, Austin Community
- Queen V. ShaRize, Executive Director, BLACK - Building Leadership And Community Knowledge Gloria Smith, Executive Director, the Black Star Project 31. Ruby Taylor, Executive Director, Taproots
- Cata Truss, Resident, Austin Community
- Dwayne Truss, Resident, Austin Community
- Karen Cecile Wallace, Kenwood Oakland Community
- Tawana Watts, Founder, BeBe's Ark
- Kenneth Wesbrooks Founder and Chairman A Work of Faith Ministries, Inc.
- Audrey L. Woodley, Founder, Changing Oasis, Inc.
- Wanda Wright, President South West Area Civic League

Our Proposal

1. Create a standing African American Affairs Committee of the Board of Education to focus on the issues that keep Black children from succeeding in school. As it stands, Black children and their families lag behind every group in indicators of success, including school performance, attendance and graduation. They lead the pack in indicators of trouble, including suspension, expulsion, juvenile arrests and detention, dropout rates and unaddressed mental health issues. Clearly, handling these issues at the administrative and school levels are not enough.
2. Create 10 districts comprised of 5 wards each, clustering districts around communities of interest and racial, cultural and ethnic groups



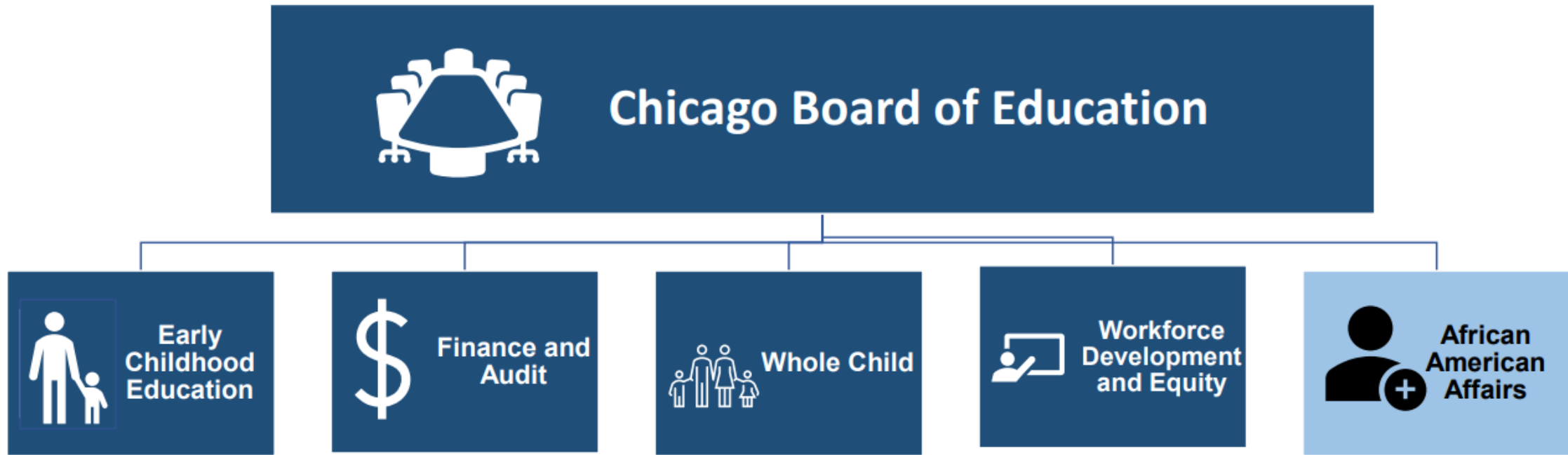
Benefits of Our Proposal

1. Optimizes potential for Chicago voters to elect Board of Education candidates of choice.
2. Increases accountability of elected school board members and Aldermen on education issues within the purview of each office. Keeping the ward structure intact within each school district boundary will minimize the chances of issues falling between the cracks because only a small portion of an elected school board district falls within a specific ward, and vice-versa.
3. Enables better coordination on issues that impact schools and multiple layers of government.
4. Complies with Voting Rights Act of Illinois and the United States
5. Creates compact, contiguous districts to the extent possible
6. Keeps communities of interest together to the extent possible

Image by [Spike Summers](#) from [Pixabay](#)

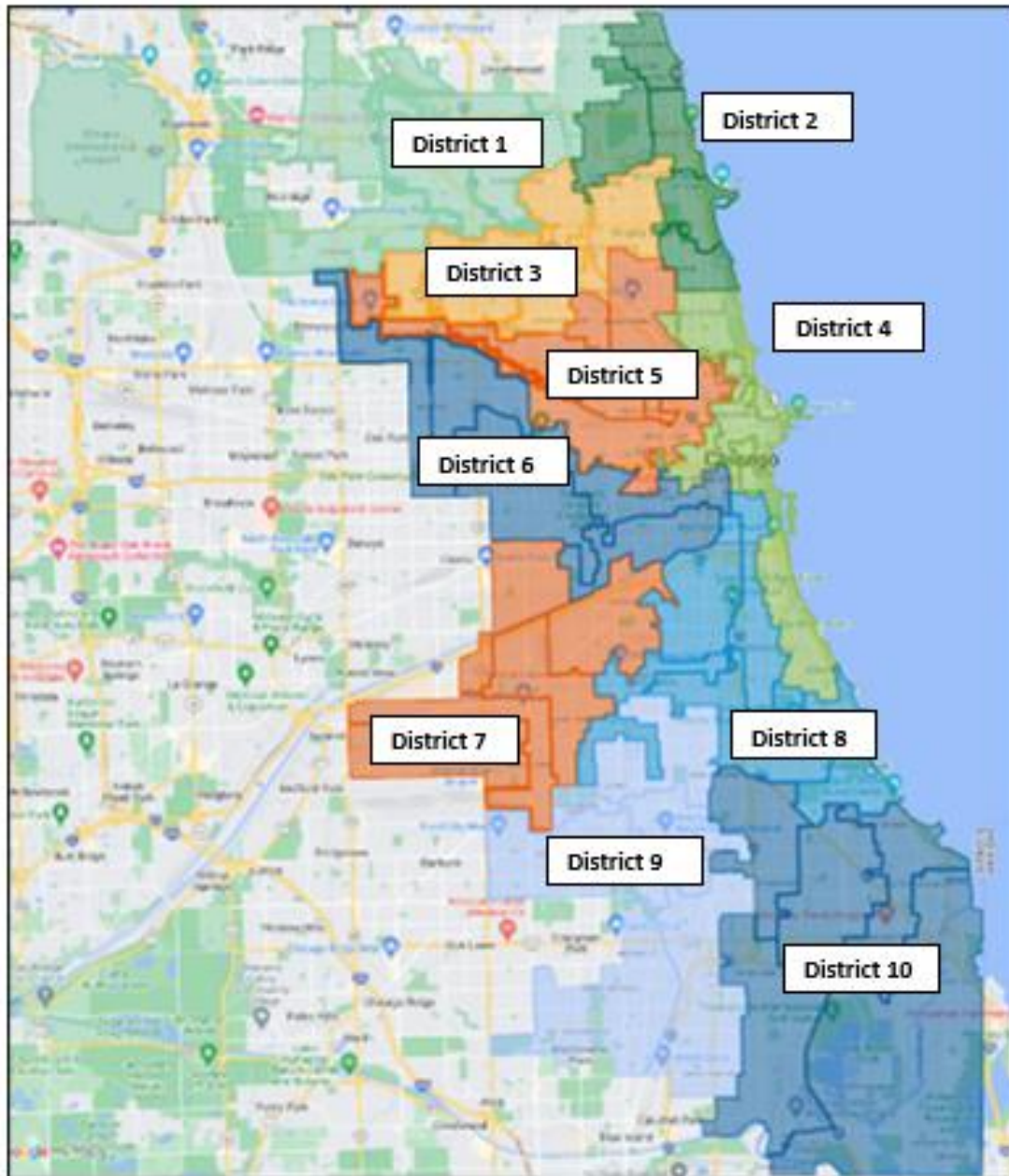


Proposed Chicago Board of Education Structure



Legend

- Existing Board Committee
- Proposed Board Committee



District 1 41 st Ward 38 th Ward 45 th Ward 39 th Ward 50 th Ward	District 6 29 th Ward 37 th Ward 28 th Ward 24 th Ward 25 th Ward
District 2 40 th Ward 49 th Ward 48 th Ward 46 th Ward 44 th Ward	District 7 22 nd Ward 12 th Ward 14 th Ward 23 rd Ward 13 th Ward
District 3 30 th Ward 31 st Ward 35 th Ward 33 rd Ward 47 th Ward	District 8 11 th Ward 3 rd Ward 20 th Ward 5 th Ward 15 th Ward
District 4 43 rd Ward 2 nd Ward 42 nd Ward 34 th Ward 4 th Ward	District 9 16 th Ward 17 th Ward 18 th Ward 19 th Ward 21 st Ward
District 5 36 th Ward 26 th Ward 1 st Ward 32 nd Ward 27 th Ward	District 10 6 th Ward 8 th Ward 7 th Ward 9 th Ward 10 th Ward

Proposed Boundaries

ERSB districts are aligned with specific wards for greater accountability and coordination with members of the City Council while maintaining racial equity and balance.

Ward boundaries were vetted for compliance with the VRA during the most recent redistricting process.

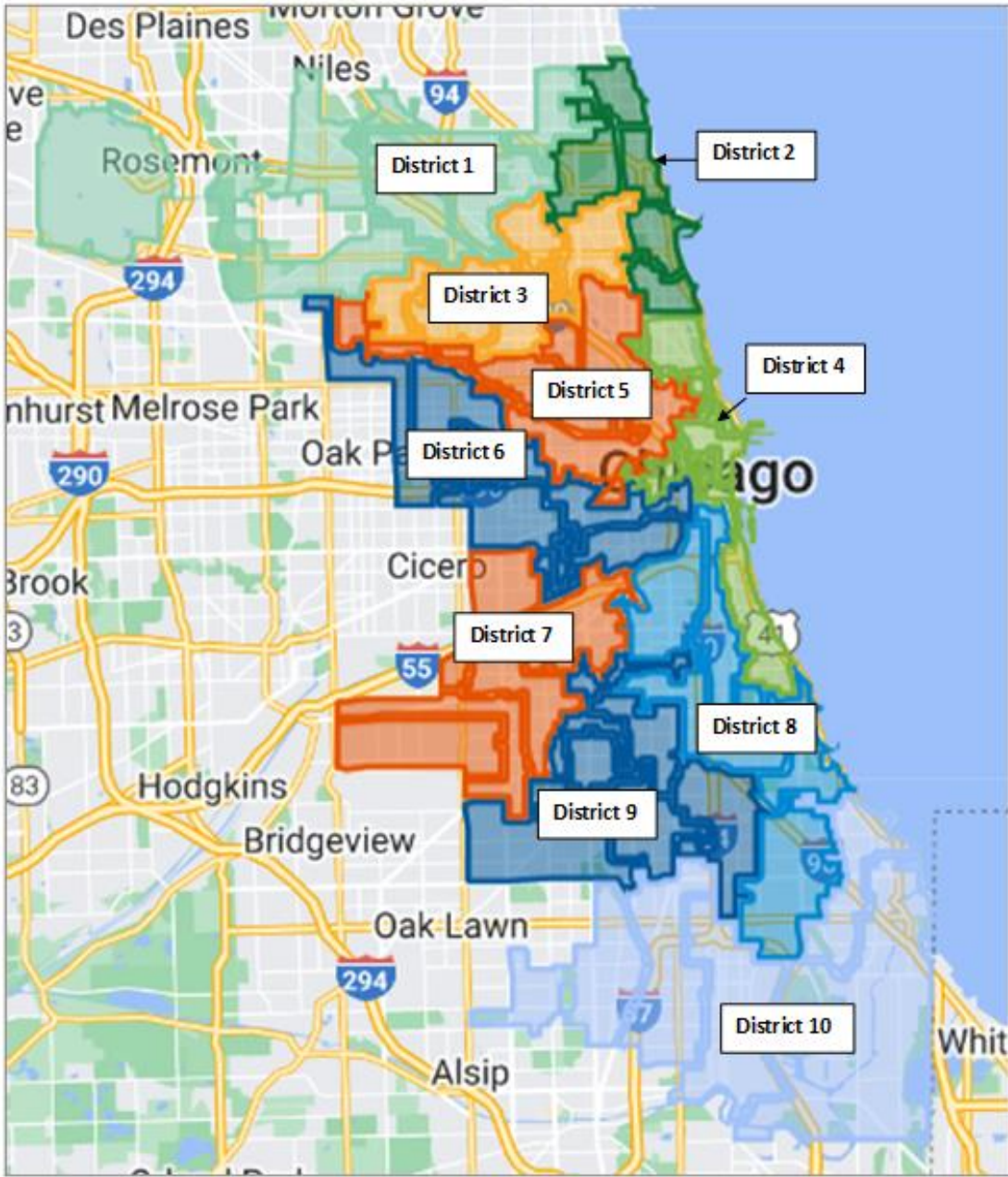
Districts in blue were generally developed using boundaries for wards that are majority or plurality Black.

Districts in orange or yellow were generally developed using boundaries for wards that are majority or plurality Latino.

Districts in green were generally developed using boundaries for wards that are majority or plurality White.

A link to the map on Google My Maps is found below.
<https://www.google.com/maps/d/edit?mid=1p6oaDMbREAJXzekNERRgdtLgJrHMySk&usp=sharing>

Alternative 1



District 1
41st Ward
38th Ward
45th Ward
39th Ward
50th Ward

District 2
40th Ward
49th Ward
48th Ward
46th Ward
44th Ward

District 3
30th Ward
31st Ward
35th Ward
33rd Ward
47th Ward

District 4
43rd Ward
2nd Ward
42nd Ward
34th Ward
4th Ward

District 5
36th Ward
26th Ward
1st Ward
32nd Ward
27th Ward

District 6
29th Ward
37th Ward
28th Ward
24th Ward
25th Ward

District 7
22nd Ward
12th Ward
14th Ward
23rd Ward
13th Ward

District 8
11th Ward
3rd Ward
20th Ward
5th Ward
8th Ward

District 9
15th Ward
16th Ward
17th Ward
18th Ward
6th Ward

District 10
19th Ward
21st Ward
9th Ward
10th Ward
7th Ward

Proposed Boundaries

ERSB districts are aligned with specific wards for greater accountability and coordination with members of the City Council while maintaining racial equity and balance.

Ward boundaries were vetted for compliance with the VRA during the most recent redistricting process.

Districts in blue were generally developed using boundaries for wards that are majority or plurality Black.

Districts in orange or yellow were generally developed using boundaries for wards that are majority or plurality Latino.

Districts in green were generally developed using boundaries for wards that are majority or plurality White.

A link to the map on Google My Maps is found below.
<https://www.google.com/maps/d/edit?mid=1p66oaDMbREAJXzekNERRgdtLgJrHMySk&usp=sharing>

Alternative 2

Questions?

Questions regarding this presentation
may be addressed to

Valerie F. Leonard

valeriefleonard@msn.com

773-571-3886



Photo: Atlanta Speech Therapy

